



# LYSAGHT<sup>®</sup> 360 SEAM<sup>®</sup>

For Beautiful  
Homes That Last

**MORE** THAN JUST A ROOF  
OVER YOUR HEAD...



# THE PERFECT ROOF TO CROWN YOUR JOY

LYSAGHT® 360 SEAM® SERIES – Building homes that inspire

With flexibility and versatility that is second to none, LYSAGHT® 360 SEAM® SERIES is ideal for creating the home of your dreams. Roof design is important to determining the character and aesthetic appeal of your home, and this lightweight, yet durable standing seam profile can be customised to suit a variety of roofs, from pitched to curved and tapered designs.

At the same time, LYSAGHT® 360 SEAM® SERIES is imbued with a stunning, metallic sheen, boasting refined colour tones that blend beautifully in any cityscape or tropical surrounding. Produced using COLORBOND® – SPECTRUM SERIES, LYSAGHT® 360 SEAM® SERIES combines versatility, aesthetic allure and durability to achieve beautiful designs that last a lifetime.





## YOUR HOME, YOUR ROOF

The ultimate roofing solution, LYSAGHT® 360 SEAM® SERIES is both durable and blessed with a remarkable talent for adapting to almost any design structure.

## CHARACTERISTICS

The many benefits of using LYSAGHT® 360 SEAM® SERIES

- **Design adaptability** – accommodates any roof geometry
- **Aesthetic compatibility** – pleasing and elegant on any type of structure: residential, commercial or industrial
- **Excellent quality** – backed by standard warranty\*
- **Weather-proof** – completely water-tight due to mechanical seaming process
- **Available in COLORBOND® SPECTRUM SERIES**
  - Highly resistant to dirt, fungal growth and staining
  - Superior durability against weathering and paint delamination for long-term colour stability
  - Stronger corrosion resistance compared to galvanised steel

“Ideal for homes that are as comfortable within as they are beautiful without.”



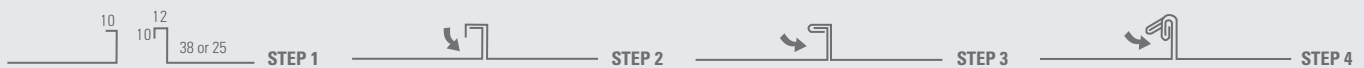
# PROPERTY TABLE

LYSAGHT® 360 SEAM® SERIES is a standing seam roofing product with rib heights of either 38mm or 25mm.

LYSAGHT® 360 SEAM® SERIES	Cover width (mm)	Mass per unit area (kg/m <sup>2</sup> )	Minimum Roof pitch (°)	Height of Seam (rib) (mm)	Pre-curve radius (mm)		Natural-curve radius (mm)		Base Metal Thickness (BMT) (mm)
					Minimum	Maximum	Minimum	Maximum	
360 SEAM® 25	521	5.21	3	25	1,500	30,000	30,000	60,000	0.55
360 SEAM® 38	495	5.48	3	38	1,500	30,000	30,000	60,000	0.55
SELECT SEAM® 25	517	5.25	7.5	25	-	-	-	-	0.55

## THE MECHANICAL SEAMING PROCESS

The seams are mechanically field seamed using the Double Lock (360) method, producing strong, watertight joints.



### Mechanical Seaming Process

*Note: Seaming process can be completed at step 3 or step 4.*

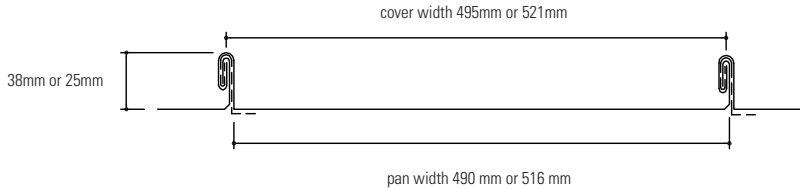
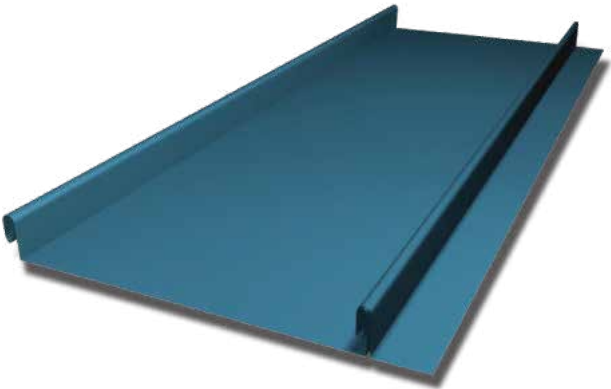
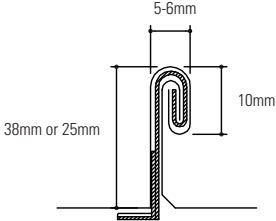
## PROFESSIONAL ADVICE

BlueScope Lysaght provides personalised consultation to help bring your design concept to life.

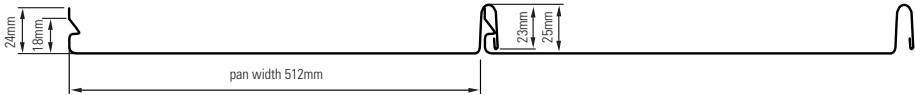
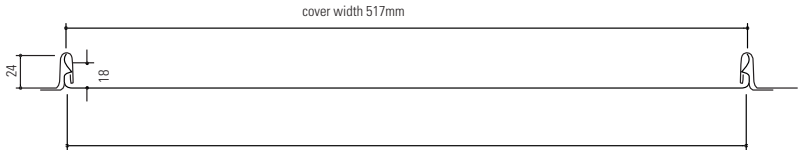
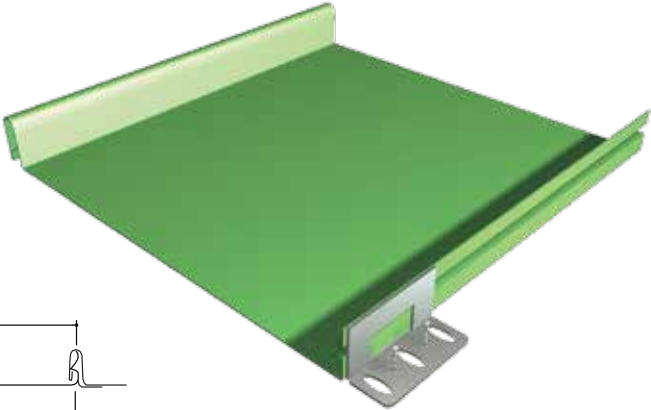
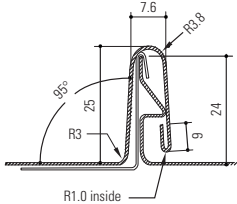
- Customised width
- Tailored solutions for your specific building requirements
- Technical support for design and installation matters
- Professional assistance from conception to completion
- Shop-drawings, including custom-designed trims and flashings
- Short lead times

\* *Warranty subject to meeting eligibility criteria and BlueScope's standard terms and conditions.*

# LYSAGHT® 360 SEAM® 25 or 38



# LYSAGHT® SELECT SEAM® 25



## NEAT STRAIGHT LINES



## SMOOTH CURVES WITHOUT CRIMPED MARKS



## TAPERED ENDS



## MODERN AND CONTEMPORARY OUTLINES

# ANY STYLE YOU WANT

Bend, fold and shape LYSAGHT® 360 SEAM® SERIES to fit any design geometry you wish.

## OIL CANNING

The appearance of flatness depends on the distribution of the stresses across the surface of the metal sheet. These stresses will change as temperature changes. The ability of a metal to transfer the effect of these stresses across the surface without buckling or distorting out of plan, will determine the level of "oil canning" that will occur.

"Oil canning" is a metaphorical term used to describe the tendency of flat surfaces to show variations in reflectivity. For example, a curved mirror will show a stretched and distorted image of a person standing in front of it. A metal surface too,

will distort the reflection of light if minor variations in and out of a level plane exist. The appearance of flatness is very much dependent on surface reflectivity. It is also caused by mill tolerances, variations in the substrate/decking and purlin alignment. Some paint finishes and metals that have high gloss index will exhibit highly apparent distortion. The visual effects of oil canning can be exacerbated by different light conditions and orientation. Darker colours visually accentuate oil canning to a greater extent than the lighter, more neutral colours.

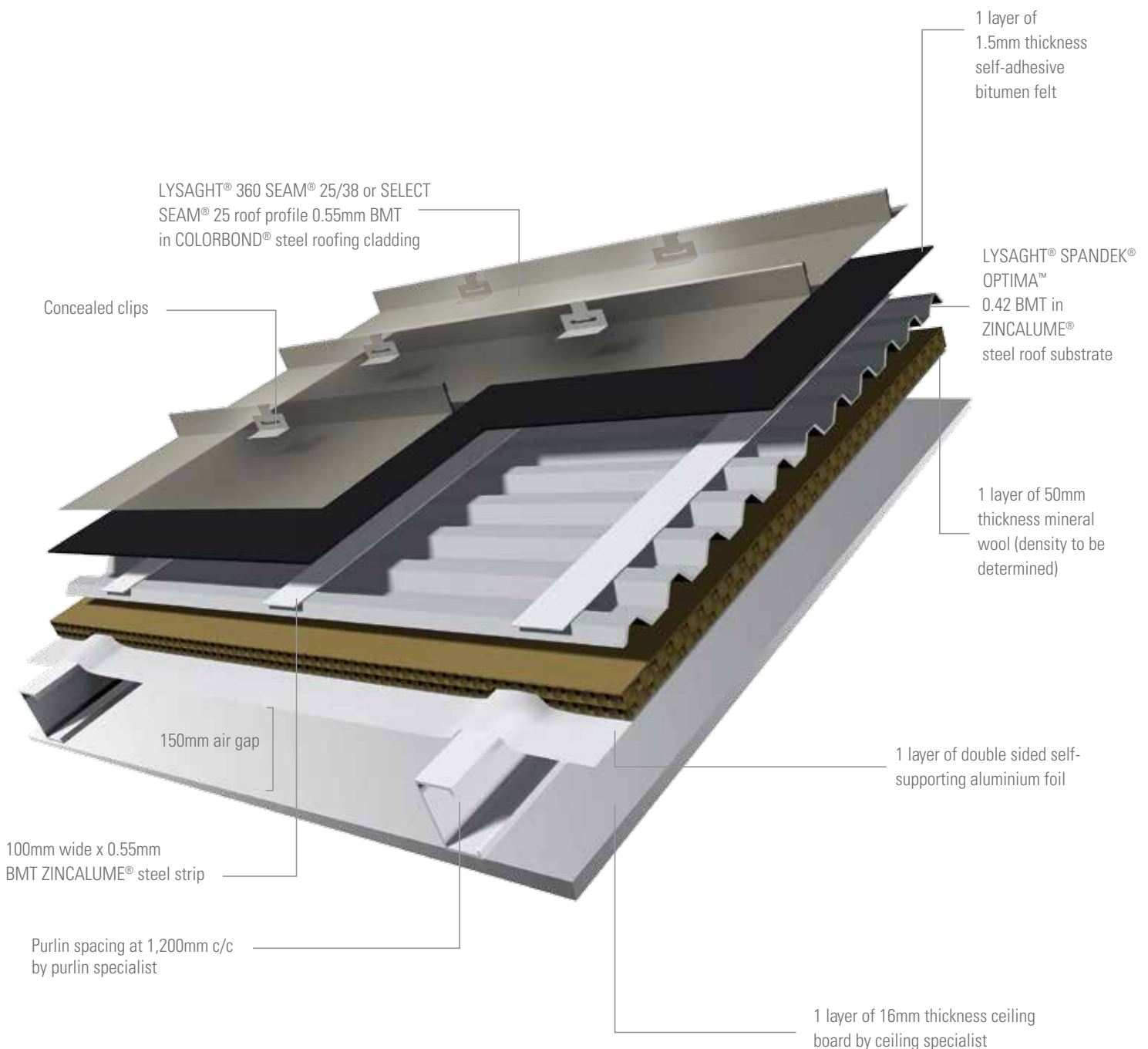
There are several precautions that can be taken to reduce the oil canning effect. One is to use thicker material, because thicker metal tends to oil-can less than thinner metal. An alternative is to specify LYSAGHT® 360 SELECT SEAM® trays with stiffening ribs in the pan of the panels.

**Oil canning is an inherent characteristic and not a defect of a standing seam profile. It is therefore not a cause for panel rejection.**



# ROOFING SOLUTION FOR INSPIRED LIVING

This illustration shows a typical roof built-up of LYSAGHT® 360 SEAM® 25/38 or SELECT SEAM® 25 based on certified sound transmission performance. Depending on your needs, we offer STC 37, STC 45 and STC 51 roof built-ups.



# CONTEMPORARY LIVING WITH COLORBOND®

LYSAGHT® 360 SEAM® SERIES was created with your most prestigious and ambitious construction projects in mind. It is manufactured using COLORBOND® steel, a high-quality, exceptional material renowned for superior corrosion resistance and colour retention. The paint system is designed to resist dirt, thus preventing unsightly stains and fungal growth for a cleaner look over time. Stronger UV resistance also minimises colour fading and paint delamination, helping to provide any modern roof with long-lasting aesthetic beauty.

Opens up a  
new world of  
inspired living

Modern. Beautiful. Lasting.



## Colorbond®

Offering a wide range of vibrant and exciting colours, COLORBOND® prepainted steel combines the superior strength of zinc/aluminium alloy-coated steel with proprietary paint system technology exclusive to BlueScope Steel. Enjoy peace of mind with the advantages of superior corrosion resistance, colour retention, dirt resistance and IR pigments to deflect heat.

## Colorbond® SPECTRUM

Developed by BlueScope Steel for the ultimate solution in beauty and design flexibility without compromising durability. The distinctive metallic surface draws on the environment and surrounding structures to enhance the prestigious appearance of your building with subtle yet remarkable effects.



National Audit Department  
of Terengganu

Roof that provide  
peace of mind for  
a lifetime.

Ponderosa Vista Phase 2 Johor



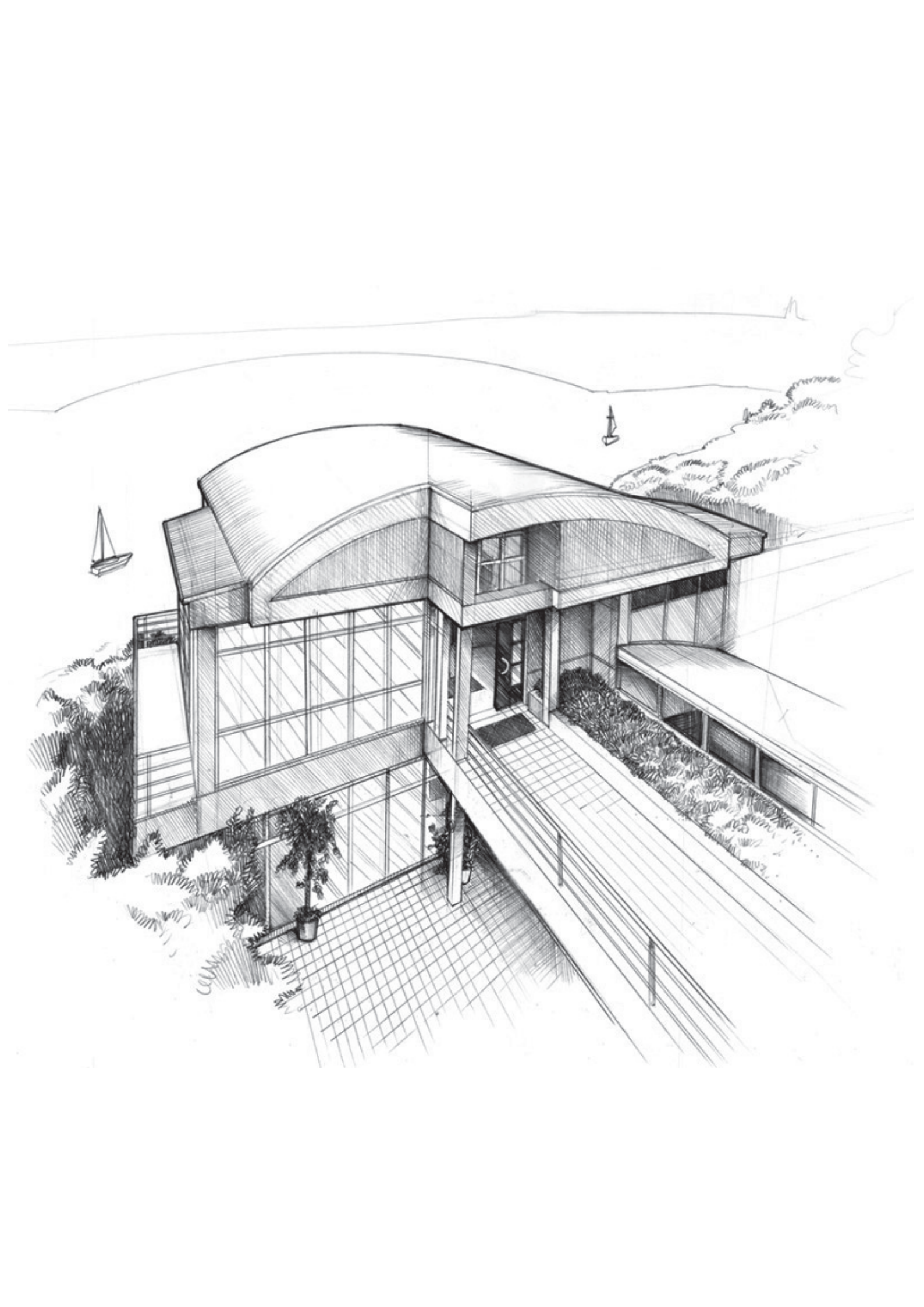
Malaysian Han Studies



Sarawak Museum

An aerial photograph of a modern building with a striking golden, ribbed, curved roof structure. The roof is composed of several large, overlapping, fan-like sections that create a dynamic, sculptural form. The building is situated in an urban environment, with other buildings and greenery visible in the background. The lighting is bright, highlighting the metallic sheen of the roof. A semi-transparent text box is overlaid on the right side of the image.

Enabling  
freedom of  
creativity  
and design  
that raises  
the roof.



A ROOF TALENTED ENOUGH TO  
LOOK AFTER ITSELF



# Trusted Partner for Building Systems

## **NS BLUESCOPE LYSAGHT MALAYSIA SDN BHD**

NO 6, PERSIARAN KEMAJUAN, SEKSYEN 16,  
40200 SHAH ALAM,  
SELANGOR DARUL EHSAN, MALAYSIA.

**TEL: +603-5520 6600 FAX: +603-5520 6601/02**

## **NORTHERN**

1-2-9, KRYSTAL POINT CORPORATE PARK,  
JALAN TUN DR. AWANG,  
LEBUH BUKIT KECIL 6,  
11900 SUNGAI NIBONG,  
PENANG, MALAYSIA.

**TEL: +604-646 9553 / 6653 FAX: +604-646 6853**

## **SOUTHERN**

BMS MALL - BLOCK A #02-08,  
NO. 6, JALAN KENCANA MAS 2/1,  
KAWASAN PERINDUSTRIAN TEBRAU III,  
81100 JOHOR BAHRU,  
JOHOR DARUL TAKZIM, MALAYSIA.

**TEL: +607-355 1576/7/8 FAX: +607-355 1579**

## **NS BLUESCOPE LYSAGHT SABAH SDN BHD**

LORONG KURMA OFF JALAN KOLOMBONG,  
88450 KOTA KINABALU,  
SABAH, MALAYSIA.

**TEL: +6088-445 161 FAX: +6088-421 178**

## **NS BLUESCOPE LYSAGHT (SARAWAK) SDN BHD KUCHING**

LOT 610, SECTION 66, PENDING INDUSTRIAL AREA,  
JALAN MERBAU, 93450 KUCHING,  
SARAWAK, MALAYSIA.

**TEL: +6082-333 621 FAX: +6082-483 486**

## **BINTULU**

LOT 974, BLOCK 26 KLD,  
KIDURONG LIGHT INDUSTRIAL ESTATE,  
97000 BINTULU, SARAWAK, MALAYSIA.

**TEL: +6086-251 736 FAX: +6086-252 881**

## **NS BLUESCOPE LYSAGHT BRUNEI SDN BHD**

INDUSTRIAL COMPLEX,  
BERIBI PHASE 1,  
6KM, JALAN GADONG,  
BANDAR SERI BEGAWAN BE 1118,  
BRUNEI DARUSSALAM.

**TEL: +673-244 7155 FAX: +673-244 7154**

## **NS BLUESCOPE LYSAGHT SINGAPORE PTE LTD**

18 BENOI SECTOR,  
JURONG TOWN,  
SINGAPORE 629851

**TEL: +65-6264 1577 FAX: +65-6265 0951**

www.lysaghtasean.com  
lysaghtmalaysia@bluescope.com  
Customer Hotline:  
**1700-81-8688**



Feb 2020

Copyright © by BlueScope Steel Limited. All rights reserved. No part of this brochure shall be reproduced, stored in a retrieval system, or transmitted in any form or by any means, electronic, mechanical, photocopying, recording or otherwise, without written permission from BlueScope Steel Limited. LYSAGHT®, ZINCALUME®, COLORBOND®, 360 SEAM® and SELECT SEAM® are registered trademarks of BlueScope Steel Limited. BlueScope is a trademark of BlueScope Steel Limited.

\* Warranty terms and conditions apply.